

Slimline LED Channel - 961 Series

The **961 Series** is a Slimline LED Channel compatible with **LED Strips up-to 0.63" (16mm) wide**.

This profile has a **wide range of accessories** to help you find the best fit for your application.

Thanks to its Heatsink design, 961 Series provides **better cooling** and helps to **extend the lifespan of your LED Strip**.

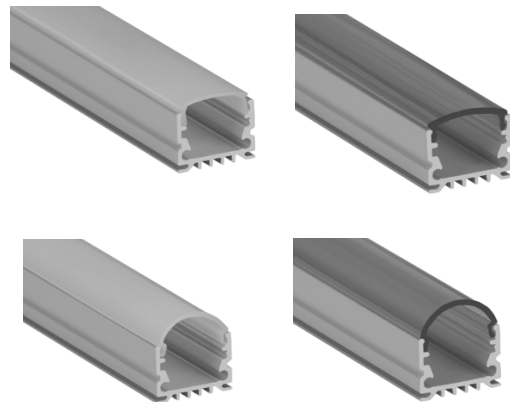
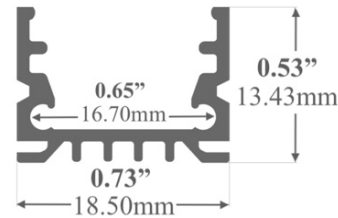
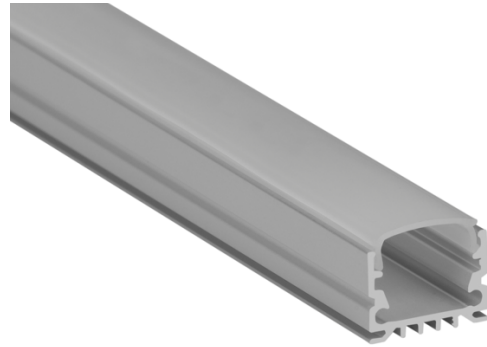
Due to its high side walls, it helps to build **Dot-Less (Hotspot-Free)** LED Fixtures using appropriate LED Strips.

Easy Installation with Mounting Brackets and Snap-In Diffusers.

Type:.....**LED Channel**
Material:...**Aluminum 6063-T5**
Surface:.....**Clear Anodized**
Height:.....**13.43mm / 0.53"**
Width:.....**18.50mm / 0.73"**

Length Availability

4ft (Actual Size 47") / 1.20m
8ft (Actual Size 94") / 2.40m
10ft (Actual Size 118") / 3.00m
Custom Lengths **up to 3.05m / 10ft**



Accessories

Diffuser Cover Lens



Clear Flat Diffuser
D21



Clear Round Diffuser
D22



Opal Flat Diffuser
D23



Opal Round Diffuser
D24

End Caps



E47
Plastic End Cap for
Flat Diffusers
(White or Grey)



E48
Plastic End Cap for
Round Diffusers
(White or Grey)



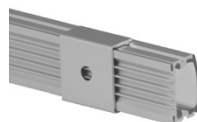
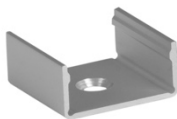
E49
Large White Plastic
End Cap for Flat
Diffusers



E50
Large Frosted Plastic
End Cap for Flat
Diffusers



Mounting



963-BRC
Flat Surface Mounting Bracket