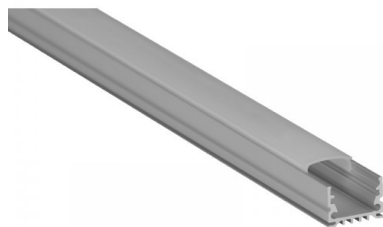


EXTRUSION KITS – 8 FOOT



Mounting



End Caps



Our Extrusion Kit LED Channel is compatible with LED Strips up-to 16mm (0.63") wide.

Type: **LED Channel**
 Material: **Aluminum 6063-T5**
 Surface: **Natural Anodized**
 Height: **13.43mm / 0.53"**
 Width: **18.50mm / 0.73"**

Length Availability

8ft (Actual Size 94.5") / 2.40m

45 DEGREE EXTRUSION KIT



End Caps



Mounting



The **45 degree** is a slimline **Corner LED Channel** compatible with **LED Strips up-to 11mm (0.44") wide**:

Type: **LED Channel**
 Material: **Aluminum 6063-T5**
 Surface: **Natural Anodized**
 Height: **16.30mm / 0.64"**
 Width: **16.30mm / 0.64"**

Length Availability

8ft (94") / 2.40m